

Silhouette

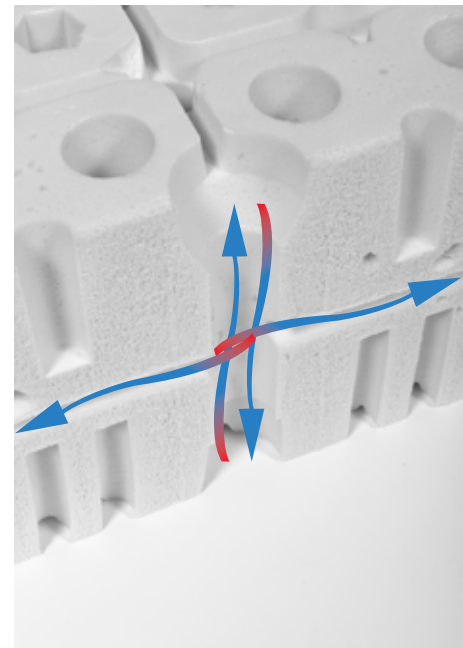
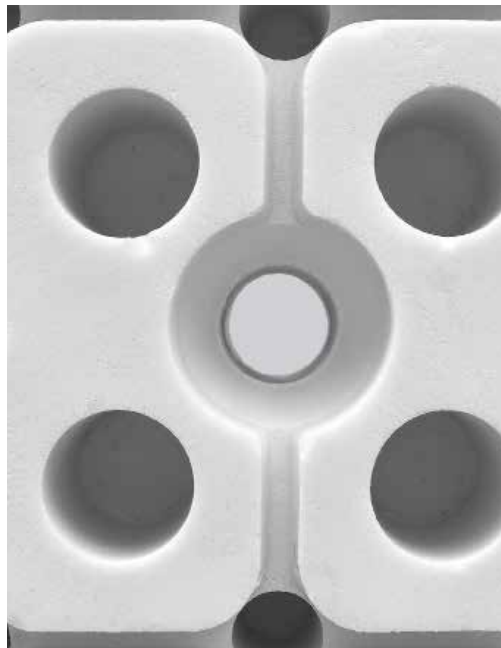
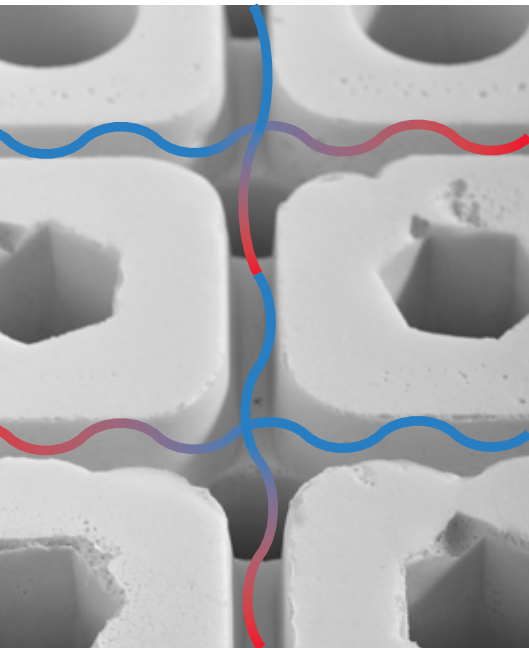


multi-comfort 7-zoned mattress

Latexco's development and innovation team is permanently in search of further improvements for the Latexco sleeping products. The newest development is the multi-comfort 7-zoned Silhouette mattress. Silhouette is designed according to the recommendations of the Ergonomie Institute of München. To achieve the perfect mechanical and thermal comfort that Silhouette provides, Latexco's D&I team, uses the most advanced technological features that are available in the industry today.

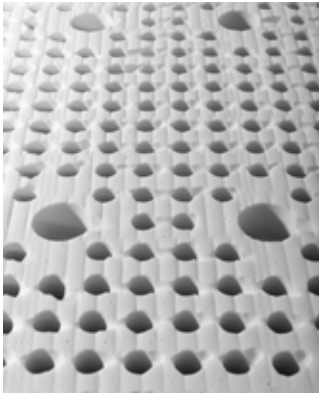
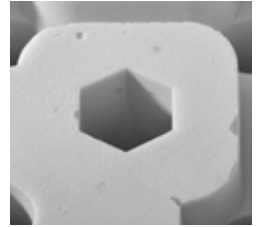
VENTILATION & MOISTURE REGULATION

The contact surface is designed with a drainage pattern (see picture 1). Via this pattern excessive moisture is guided to the top-to-bottom perforations present in the silhouette mattress. The vertical top-to-bottom perforations are directly connected to the horizontal aeration channels (see picture 2 & 3). This cross-link enables a 4-dimensional pump effect. This 4D air-flow reduces excessive heat and creates a perfect micro-climate. The silhouette mattress is constantly ventilated and refreshed throughout the full core.

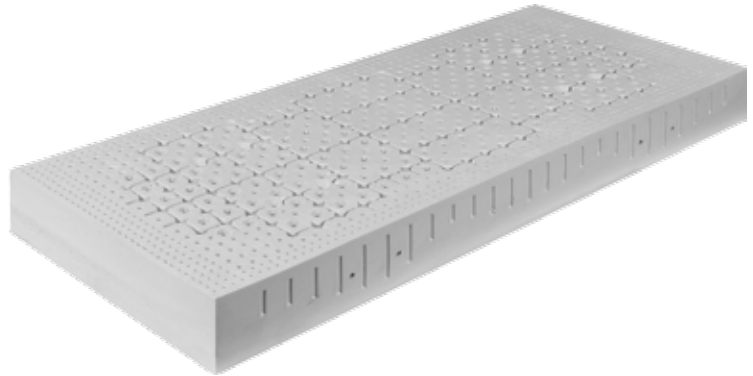


COMFORT & SUPPORT

The silhouette mattress offers enhanced progressive support thanks to the exclusive conical design of the perforations. The soft welcoming of the contact surface is followed by a much more supportive comfort in the deeper center of the core.



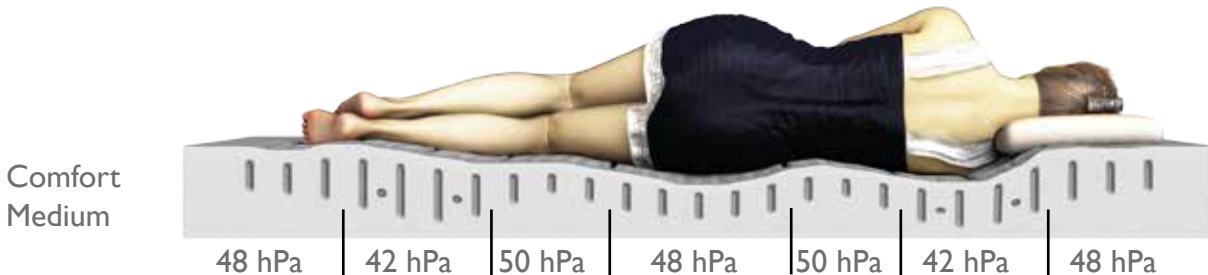
The bottom surface of the silhouette mattress is designed to maximise the contact-points with the bed base. This ensures an equal pressure distribution on the combination of the silhouette mattress with the bed base.



ZONING

The body-shaped zoning offers wide shoulder zones. The first soft contact in the head/feet – and the lumbar is improved by the introduction of hexagonal perforations. The denser structure of the hip zone gives a stronger support to the sleepers body.

The soft/firmness levels are reflected in the side panels of the silhouette mattress.





Head Office

Latexco N.V.
Sint-Amandstraat 8bis
8700 Tiel
Belgium
Phone +32(0)51 40 14 31
Fax +32(0)51 40 55 66
info@latexco.com

Latexco Brasil
Rua Dr. Neto de Araújo 320
Conj. 403
Vila Mariana - CEP 04111-001
São Paulo - SP - Brasil
Phone +55 11 2373 8551
info.brasil@latexco.com

Locations

Latexco España SAU
Poligono Industrial La Cuesta II, s/n
50100 La Alumunia de Dona Godina
Zaragoza - Spain
Phone +34 976 811 749
Fax +34 976 811 747
latexco.espana@latexco.com

PT Latexco Indonesia
JL Mayen Sungkono 5 - Blok D No 1-6
Desa Segoromadu - Kecamatan
Kebomas, Gresik - Indonesia
Phone +62 31 398 0878
Fax +62 31 398 0879
latexco@latexco-ind.com

Latexco West LLC
6725 8th Street
Buena Park, California 90620
USA
Phone +714 522 4991
Fax +714 522 4900
info.latexcowest@latexco.com

Latexco Asia Pacific Pte Ltd
161B Telok Ayer Street
Singapore 068615
Asia
Phone +65 6227 3292
Fax +65 6234 2706
latexco@latexco-asia.com

Latexco LLC
975 Gerrard Road
Lavonia, 30553 Georgia
USA
Phone +866 528 3926
Fax +203 245 1260
info.us@latexco.com

FIAB Forserum AB
Fabriksgatan 15
S-571 78 Forserum
Sweden
Phone +46(0)380 294 00
Fax +46(0)380 205 83
mail@fiab.se